



## REGISTRATION FEE

Rates are listed for **students / regular attendees** (academic institutes) / **companies**. The seat for the workshop is only guaranteed if payment or at least proof of payment is received no later than the due date specified for the individual rates.

**Early bird rate:** 735 Euro / 795 Euro / 1345 Euro  
Registration until October 20, 2010  
Payment until October 30, 2010

**Reduced rate:** 835 Euro / 895 Euro / 1445 Euro  
Registration until November 30, 2010  
Payment until December 15, 2010

**Regular rate:** 935 Euro / 995 Euro / 1545 Euro  
Registration after November 30, 2010  
Payment due on January 15, 2011

### THE REGISTRATION FEE INCLUDES:

- handout materials
- lunch, dinner and coffee breaks for all workshop days
- all costs for tracer, contrast agents, animals, etc. needed during the workshop

Members of the German Association for Nuclear Medicine receive a 50 Euro discount. Please provide your member number at registration.

### METHODS OF PAYMENT:

- Credit card (preferred)
- Wiring

### CANCELLATION FEES:

Cancellation by November 1, 2010: 50 Euro + potential costs for transfer/wiring

Cancellation by December 16, 2010: 150 Euro + potential costs for transfer/wiring

Cancellation after December 17, 2010: 250 Euro + potential costs for transfer/wiring

**NOTE:** large portions of the workshop are held in radiation areas, where access for pregnant women is not permitted!

## EVENT DETAILS

### SESSION TIMES:

9:00 am – 18:00 pm „sessions in small groups“  
19:00 pm – 22:00 pm „hands on training“ (voluntarily)

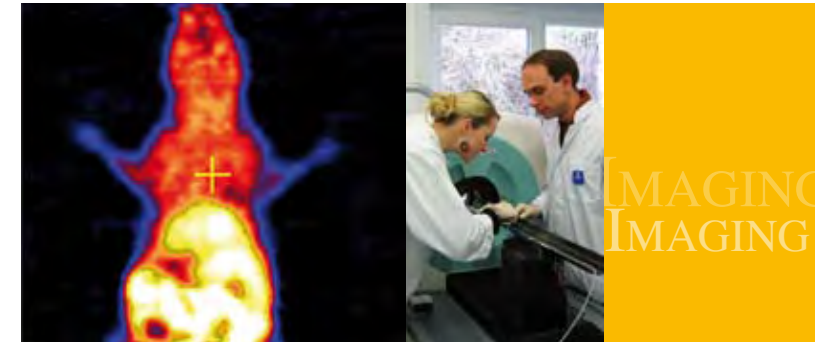
### ACCOMODATION & TRANSPORTATION

Hotels can be found on our web page:  
[www.preclinicalimaging.org](http://www.preclinicalimaging.org) under „Laboratory/how-to-find-us“

### MORE INFORMATION

FOR REGISTRATION AND FURTHER INFORMATION PLEASE VISIT OUR WEBSITE ([www.preclinicalimaging.org](http://www.preclinicalimaging.org)) OR CONTACT MS. WALSH BY EMAIL OR FAX

Laboratory for Preclinical Imaging and Imaging Technology of the Werner Siemens-Foundation  
Department of Radiology  
Röntgenweg 13  
72076 Tübingen  
GERMANY  
Ph.: +49 7071 29 83450  
Fax: +49 7071 29 4451  
E-Mail: [Tanja.Walsh@med.uni-tuebingen.de](mailto:Tanja.Walsh@med.uni-tuebingen.de)  
[www.preclinicalimaging.org](http://www.preclinicalimaging.org)

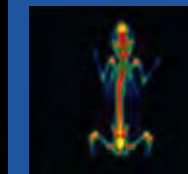
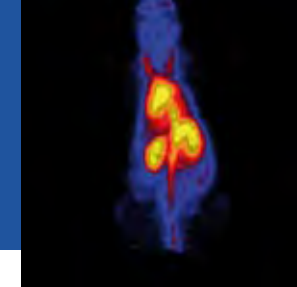
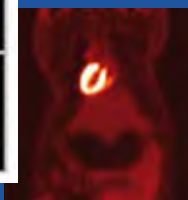
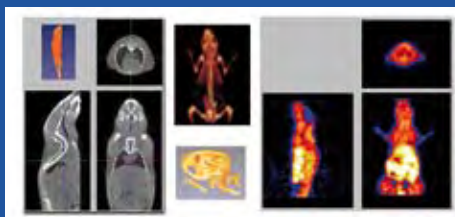


# 6. SMALL ANIMAL IMAGING WORKSHOP

January 24 - January 28, 2011



Laboratory for Preclinical Imaging and Imaging Technology of the Werner Siemens-Foundation



## INVITATION

We intend to provide an overview on state-of-the-art small animal imaging modalities including microPET, microSPECT, 7 Tesla MRI, fluorescence and bioluminescence optical imaging, high resolution ultrasound and microscopy. A major focus will be hands-on-training rather than on lectures; each attendee will have the opportunity to work with animals and the different imaging modalities. After the introductory lectures, we will establish four small groups working on the different modalities based on a „rotation principle“ (the program on the next page shows as an exemplary agenda for one group). The workshop is limited to a maximum of 32 attendees (first come first serve). We are very glad that we can offer the 6<sup>th</sup> hands-on driven Small Animal Imaging Workshop at Tübingen. Both, individuals with experience in small animal imaging as well as beginners are welcome to join this workshop.

Bernd Pichler, PhD

## TOPICS

- **Animal handling**  
i.v./i.p. injection, tail vein catheter, anaesthesia, dissection, etc.
- **microPET**  
static + dynamic scan, cont. bed motion, attenuation correction, etc.
- **microCAT**  
in vivo scans, HiRes ex vivo scans, respiratory gating, etc.
- **microSPECT**  
in vivo scans, SPECT/CT multimodality studies
- **7 T MRI**  
scan protocol setup, in vivo scans, contrast agent scans, cardiac and respiratory gating, use of different imaging sequences
- **Optical imaging**  
in vivo + in vitro fluorescence, in vivo bioluminescence
- **High-resolution ultrasound**
- **Autoradiography, biodistribution, cell labelling, microscopy**
- **Image analysis**  
microPET, microCAT and MR image analysis with Inveon Research Workplace (IRW), PMOD (kinetic modelling), syngo, AsiPro

## PROGRAM

(Example for one Group)

### Monday

- 9:30 Welcome Breakfast
- 10:00 Lecture: Animal Imaging
- 12:00 Lunch
- 13:00 Lecture: Animal Imaging Part II
- 16:00 Lecture: Radiation Safety
- 17:00 Practice: Animal Handling
- 19:00 Dinner

### Tuesday

- 9:00 **MicroPET- Practice**
  - How it works
  - Protocol setup
  - Static Scan
  - Dynamic Scan
  - Gating
- 12:00 Lunch
- 13:00 **MicroPET- Practice**
  - Documentation
  - Image Analysis
  - Reconstruction
- 16:00 **Ultrasound**
- 18:00 Break/Dinner
- 19:00 Individual Hands-on-Training (voluntarily)



### Wednesday

- 9:00 **MicroCAT-Practice**
  - Scan Protocol
  - Scan Setup
  - Performing Scans
  - Gating
- 12:00 Lunch
- 13:00 **MicroCAT-Practice**
  - High resolution ex vivo scan
  - Image analysis
- 16:00 **Optical Imaging-Practice**
- 18:00 Break/Dinner
- 19:00 Individual Hands-on-Training (voluntarily)

### Thursday

- 9:00 **7 T MRI practice**
  - Scan Protocol
  - Scan Setup
- 12:00 Lunch
- 13:00 **7 T MRI Practice Image Analysis Practice**
- 16:00 **Practice**
  - Cryosectioning
  - Autoradiography
  - Cell labeling
  - Biodistribution
- 18:00 Break/Dinner
- 19:00 Individual Hands-on-Training (voluntarily)

### Friday

- 9:00 **MicroSPECT-Practice**
  - Scan Protocol
  - Scan Setup
  - Performing Scans
- 12:00 Lunch
- End of Workshop