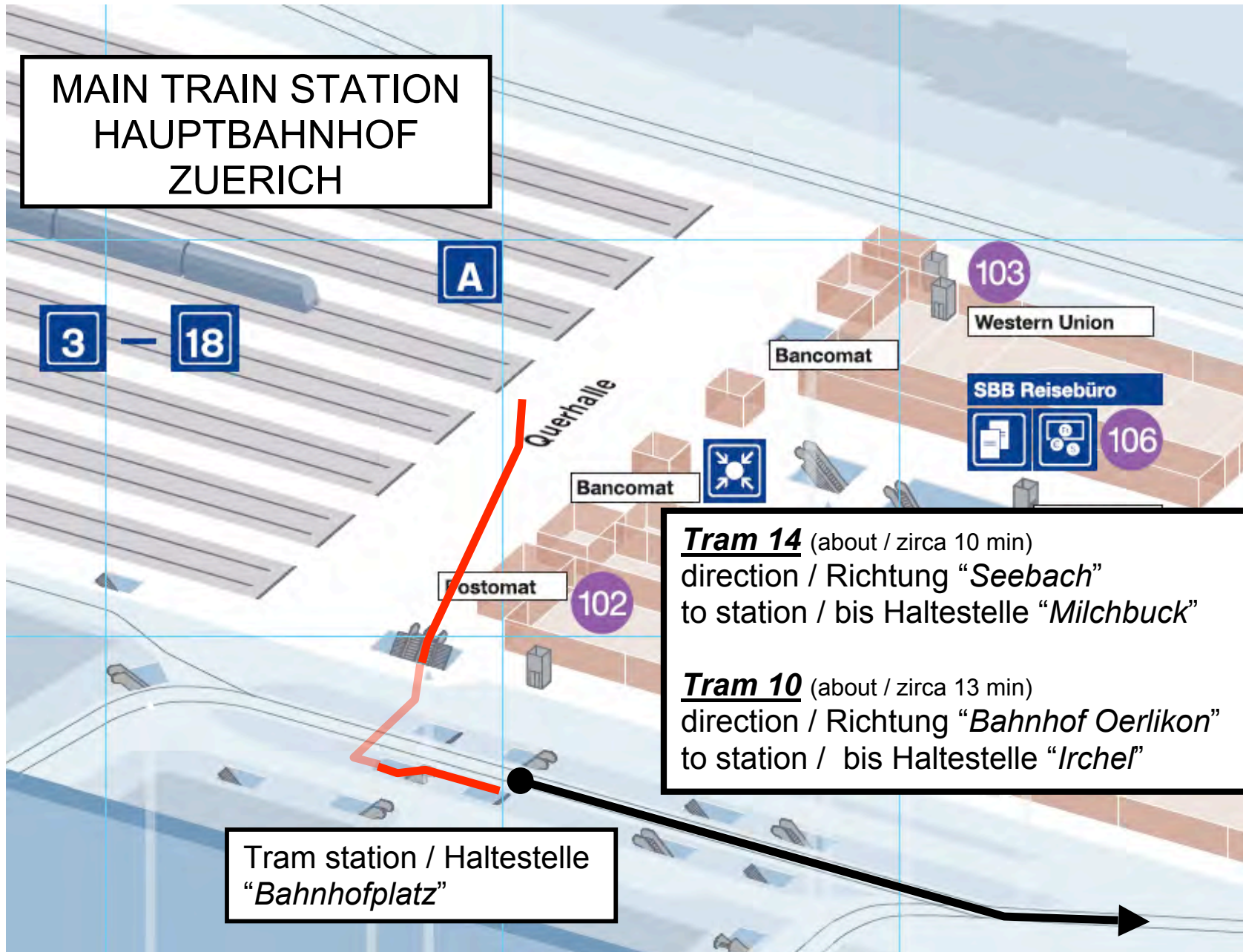


MAIN TRAIN STATION  
HAUPTBAHNHOF  
ZUERICH



A

3

18

Querhalle

103

Western Union

Bancomat

SBB Reisebüro

106

Bancomat



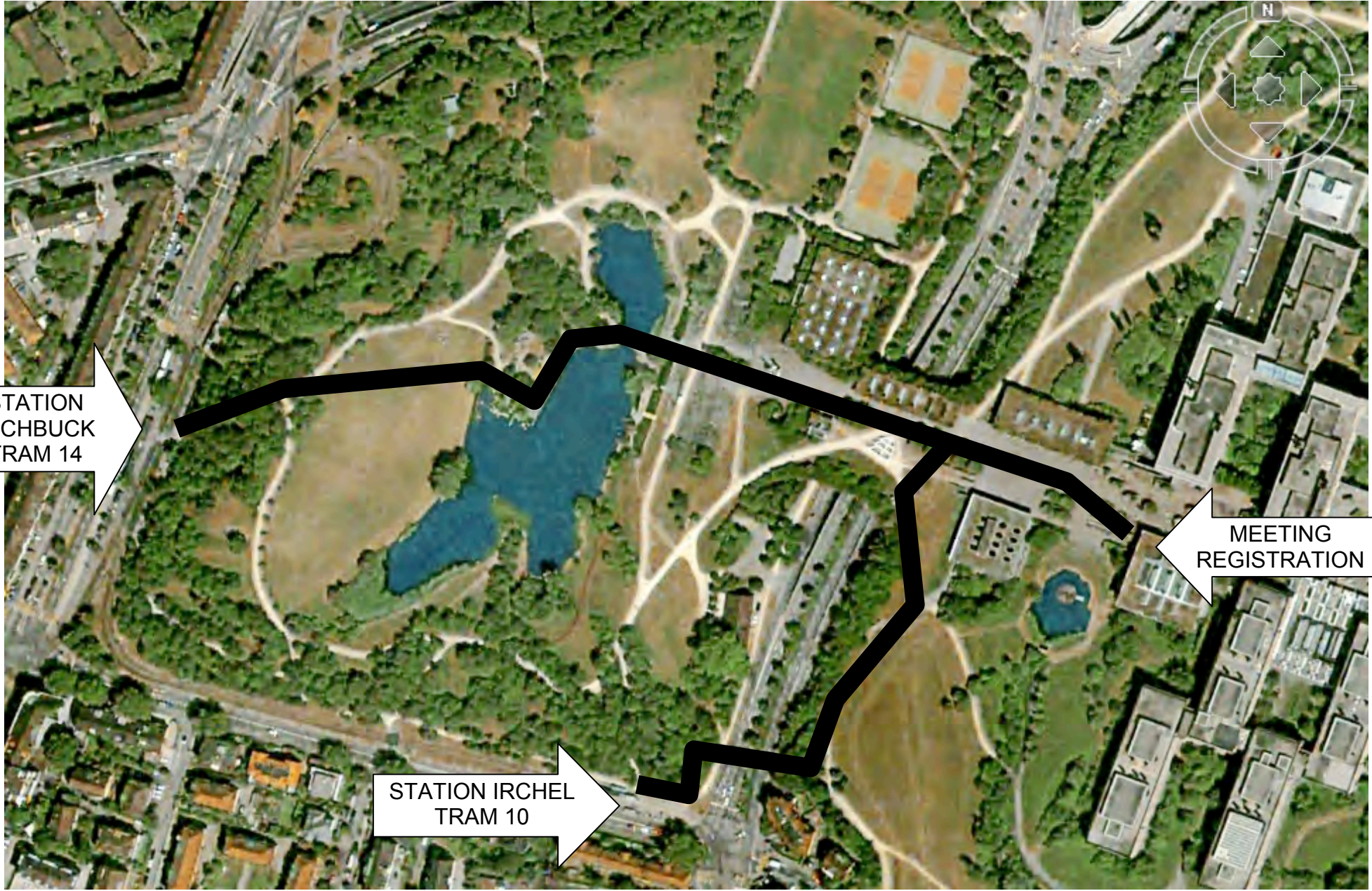
Postomat

102

***Tram 14*** (about / zirca 10 min)  
direction / Richtung "Seebach"  
to station / bis Haltestelle "Milchbuck"

***Tram 10*** (about / zirca 13 min)  
direction / Richtung "Bahnhof Oerlikon"  
to station / bis Haltestelle "Irchel"

Tram station / Haltestelle  
"Bahnhofplatz"



STATION  
MICHBUCK  
TRAM 14

MEETING  
REGISTRATION

STATION IRCHEL  
TRAM 10